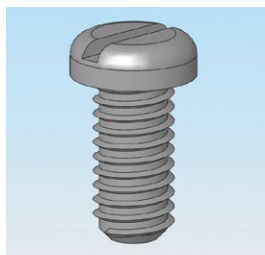


# RCCN 日成NSPH型尼龙圆头一字头螺丝 Nylon Screw Pan Head



材质：UL合格之NYLON66(本色).  
 防火等级:94V-2，绝缘性佳，不易老化。  
 用途:PC板,机板及其它产品固定用。  
 特点:质量轻,绝缘,抗干扰,不生锈,耐酸碱,耐候性强。  
 说明:本品与NSCH型区别头部偏圆角，参考3D图。  
 Material：UL approved NYLON66(natural),  
 Fireproof: 94V-2, good insulation,  
 good aging resistant

型号 Item No.	螺牙 Thread	L	D	K	包装 Packing
NSPH-M204	M2	4	4.0	1.3	1000pcs
NSPH-M205	M2	5	4.0	1.3	
NSPH-M206	M2	6	4.0	1.3	
NSPH-M208	M2	8	4.0	1.3	
NSPH-M210	M2	10	4.0	1.3	
NSPH-M212	M2	12	4.0	1.3	
NSPH-M216	M2	16	4.0	1.3	
NSPH-M220	M2	20	4.0	1.3	
NSPH-M225	M2	25	5.0	1.5	
NSPH-M2.5-4.5	M2.5	4.5	5.0	1.5	
NSPH-M2.5-6	M2.5	6	5.0	1.5	
NSPH-M2.5-8	M2.5	8	5.0	1.5	
NSPH-M2.5-10	M2.5	10	5.0	1.5	
NSPH-M2.5-12	M2.5	12	5.0	1.5	
NSPH-M2.5-16	M2.5	16	5.0	1.5	
NSPH-M2.5-20	M2.5	20	5.0	1.5	1000pcs
NSPH-M2.5-25	M2.5	25	5.0	1.5	
NSPH-M304	M3	4	5.6	1.8	
NSPH-M305	M3	5	5.6	1.8	
NSPH-M306	M3	6	5.6	1.8	
NSPH-M308	M3	8	5.6	1.8	
NSPH-M310	M3	10	5.6	1.8	
NSPH-M312	M3	12	5.6	1.8	
NSPH-M316	M3	16	5.6	1.8	
NSPH-M320	M3	20	5.6	1.8	
NSPH-M325	M3	25	5.6	1.8	
NSPH-M330	M3	30	5.6	1.8	
NSPH-M335	M3	35	5.6	1.8	
NSPH-M340	M3	40	5.6	1.8	

型号 Item No.	螺牙 Thread	L	D	K	包装 Packing
NSPH-M406	M4	6	8.0	2.4	1000pcs
NSPH-M408	M4	8	8.0	2.4	
NSPH-M410	M4	10	8.0	2.4	
NSPH-M412	M4	12	8.0	2.4	
NSPH-M416	M4	16	8.0	2.4	
NSPH-M420	M4	20	8.0	2.4	
NSPH-M425	M4	25	8.0	2.4	
NSPH-M430	M4	30	8.0	2.4	
NSPH-M440	M4	40	8.0	2.4	
NSPH-M506	M5	6	9.5	3.0	
NSPH-M508	M5	8	9.5	3.0	
NSPH-M510	M5	10	9.5	3.0	
NSPH-M512	M5	12	9.5	3.0	
NSPH-M516	M5	16	9.5	3.0	
NSPH-M520	M5	20	9.5	3.0	
NSPH-M525	M5	25	9.5	3.0	
NSPH-M530	M5	30	9.5	3.0	
NSPH-M540	M5	40	9.5	3.0	
NSPH-M550	M5	50	9.5	3.0	500pcs
NSPH-M605	M6	5	12.0	3.6	
NSPH-M606	M6	6	12.0	3.6	
NSPH-M6-6.5	M6	6.5	12.0	3.6	
NSPH-M608	M6	8	12.0	3.6	
NSPH-M610	M6	10	12.0	3.6	
NSPH-M612	M6	12	12.0	3.6	
NSPH-M616	M6	16	12.0	3.6	
NSPH-M620	M6	20	12.0	3.6	
NSPH-M625	M6	25	12.0	3.6	
NSPH-M630	M6	30	12.0	3.6	
NSPH-M640	M6	40	12.0	3.6	
NSPH-M650	M6	50	12.0	3.6	
NSPH-M660	M6	60	12.0	3.6	

